

Return of Organization Exempt From Income Tax

2005

Under section 501(c), 527, or 4947(a)(1) of the Internal Revenue Code (except black lung benefit trust or private foundation)

Open to Public Inspection

Department of the Treasury Internal Revenue Service

The organization may have to use a copy of this return to satisfy state reporting requirements

A For the 2005 calendar year, or tax year beginning 8/01, 2005, and ending 7/31, 2006

B Check if applicable: Address change, Name change, Initial return, Final return, Amended return, Application pending. Please use IRS label or print or type. See specific instructions. People for the Ethical Treatment of Animals, Inc. 501 Front Street Norfolk, VA 23510. D Employer Identification Number 52-1218336. E Telephone number (757) 622-7382. F Accounting method: Cash, Accrual (checked), Other (specify).

Section 501(c)(3) organizations and 4947(a)(1) nonexempt charitable trusts must attach a completed Schedule A (Form 990 or 990-EZ).

H and I are not applicable to section 527 organizations. H (a) Is this a group return for affiliates? Yes No (checked). H (b) If 'Yes,' enter number of affiliates. H (c) Are all affiliates included? Yes No. H (d) Is this a separate return filed by an organization covered by a group ruling? Yes No (checked).

G Web site: www.peta.org

J Organization type (check only one): 501(c) 3 (insert no), 4947(a)(1) or 527

K Check here if the organization's gross receipts are normally not more than \$25,000. The organization need not file a return with the IRS; but if the organization chooses to file a return, be sure to file a complete return. Some states require a complete return.

I Group Exemption Number. M Check if the organization is not required to attach Schedule B (Form 990, 990-EZ, or 990-PF).

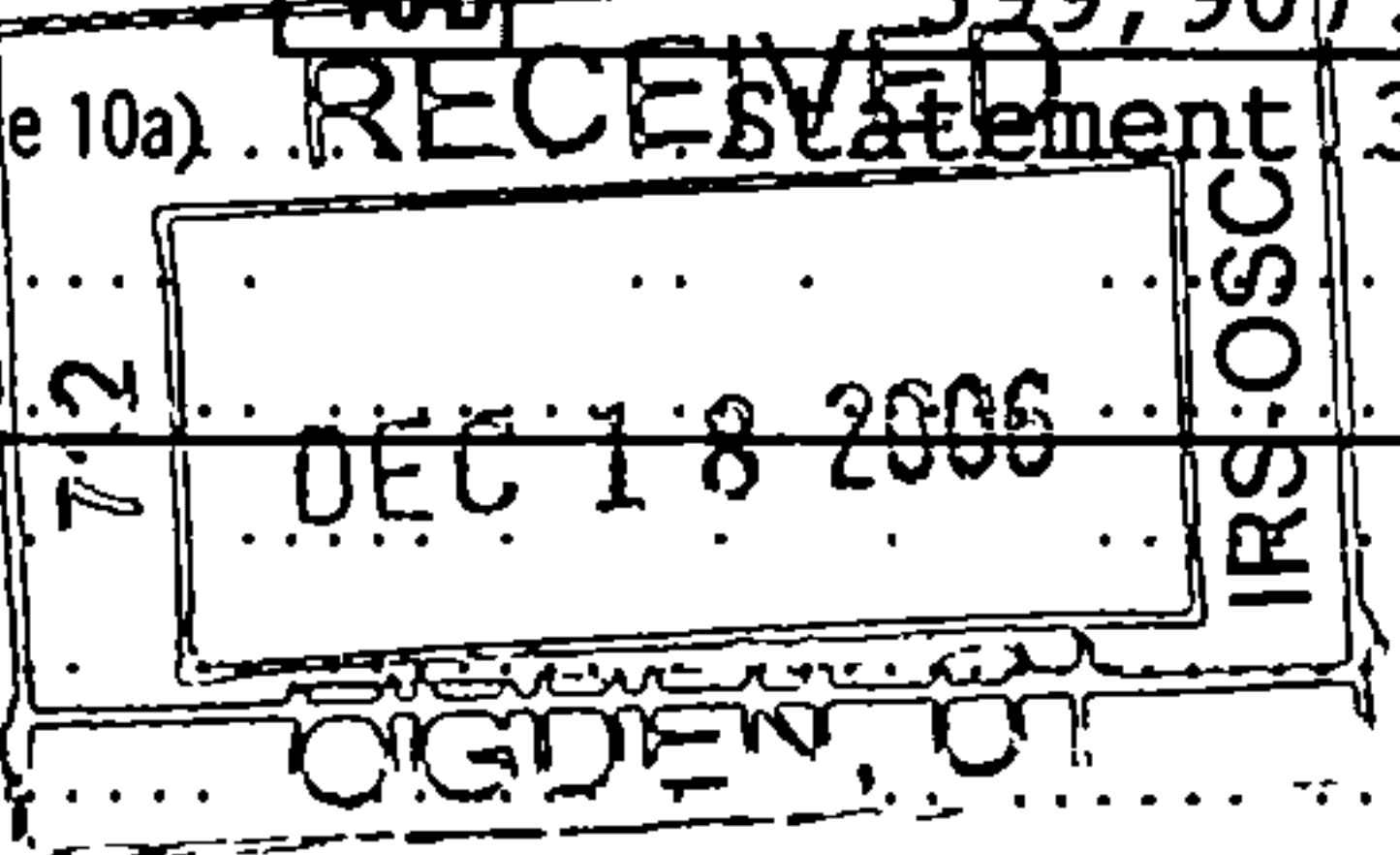
L Gross receipts: Add lines 6b, 8b, 9b, and 10b to line 12. 40,812,908.

Part I Revenue, Expenses, and Changes in Net Assets or Fund Balances (See Instructions)

Table with 21 rows and 4 columns. Rows include: 1 Contributions, gifts, grants, and similar amounts received; 2 Program service revenue including government fees and contracts; 3 Membership dues and assessments; 4 Interest on savings and temporary cash investments; 5 Dividends and interest from securities; 6a Gross rents; 6b Less: rental expenses; 6c Net rental income or (loss); 7 Other investment income; 8a Gross amount from sales of assets other than inventory; 8b Less: cost or other basis and sales expenses; 8c Gain or (loss); 8d Net gain or (loss); 9 Special events and activities; 9a Gross revenue; 9b Less: direct expenses other than fundraising expenses; 9c Net income or (loss) from special events; 10a Gross sales of inventory, less returns and allowances; 10b Less: cost of goods sold; 10c Gross profit or (loss) from sales of inventory; 11 Other revenue; 12 Total revenue; 13 Program services; 14 Management and general; 15 Fundraising; 16 Payments to affiliates; 17 Total expenses; 18 Excess or (deficit) for the year; 19 Net assets or fund balances at beginning of year; 20 Other changes in net assets or fund balances; 21 Net assets or fund balances at end of year.

RECEIVED

RECEIVED JAN 11 2007



Handwritten numbers: 9-15 and 9



**Part II Statement of Functional Expenses** All organizations must complete column (A). Columns (B), (C), and (D) are required for section 501(c)(3) and (4) organizations and section 4947(a)(1) nonexempt charitable trusts but optional for others.

Do not include amounts reported on line 6b, 8b, 9b, 10b, or 16 of Part I.		(A) Total	(B) Program services	(C) Management and general	(D) Fundraising
22	Grants and allocations (att sch) See Stm 5 (cash \$ 370,999. non-cash \$ 9,856.)				
	If this amount includes foreign grants, check here <input checked="" type="checkbox"/>	22 380,855.	380,855.		
23	Specific assistance to individuals (att sch)	23			
24	Benefits paid to or for members (att sch)	24			
25	Compensation of officers, directors, etc	25 100,470.	99,285.	173.	1,012.
26	Other salaries and wages	26 5,751,806.	5,683,929.	9,928.	57,949.
27	Pension plan contributions	27 27,583.	27,257.	48.	278.
28	Other employee benefits	28 41,118.	40,633.	71.	414.
29	Payroll taxes	29 401,125.	396,392.	692.	4,041.
30	Professional fundraising fees	30 592,989.			592,989.
31	Accounting fees	31 93,053.	70,264.	14,643.	8,146.
32	Legal fees	32 1,828,545.	1,380,738.	287,737.	160,070.
33	Supplies	33 527,795.	407,879.	12,303.	107,613.
34	Telephone	34 626,199.	604,173.	2,256.	19,770.
35	Postage and shipping	35 3,571,849.	3,390,201.	5,853.	175,795.
36	Occupancy	36 555,023.	530,245.	7,324.	17,454.
37	Equipment rental and maintenance	37 147,261.	137,720.	1,902.	7,639.
38	Printing and publications	38 1,397,468.	1,079,961.	32,577.	284,930.
39	Travel	39 980,430.	851,522.	3,155.	125,753.
40	Conferences, conventions, and meetings	40			
41	Interest	41 92,522.	71,585.	2,159.	18,778.
42	Depreciation, depletion, etc (attach schedule)	42 163,629.	129,505.	3,906.	30,218.
43	Other expenses not covered above (itemize):				
a	Consultants	43a 5,578,438.	3,755,583.	825,446.	997,409.
b	Education, Promo Communi	43b 2,187,812.	1,392,073.	486.	795,253.
c	General Operating Expens	43c 994,882.	768,990.	23,196.	202,696.
d	Media & Press Support	43d 1,097,571.	1,031,971.	179.	65,421.
e		43e			
f		43f			
g		43g			
44	Total functional expenses. Add lines 22 through 43. (Organizations completing columns (B) - (D), carry these totals to lines 13 - 15)	44 27,138,423.	22,230,761.	1,234,034.	3,673,628.

Joint Costs. Check  if you are following SOP 98-2.

Are any joint costs from a combined educational campaign and fundraising solicitation reported in (B) Program services?  Yes  No  
 If 'Yes,' enter (i) the aggregate amount of these joint costs \$ 4,792,574. ; (ii) the amount allocated to Program services \$ 3,303,897. ; (iii) the amount allocated to Management and general \$ 49,813. ; and (iv) the amount allocated to Fundraising \$ 1,438,864. .

Part III Statement of Program Service Accomplishments

Form 990 is available for public inspection and, for some people, serves as the primary or sole source of information about a particular organization. How the public perceives an organization in such cases may be determined by the information presented on its return. Therefore, please make sure the return is complete and accurate and fully describes, in Part III, the organization's programs and accomplishments.

What is the organization's primary exempt purpose? ▶ <u>Protection of animal rights</u> All organizations must describe their exempt purpose achievements in a clear and concise manner. State the number of clients served, publications issued, etc. Discuss achievements that are not measurable. (Section 501(c)(3) and (4) organizations and 4947(a)(1) nonexempt charitable trusts must also enter the amount of grants and allocations to others.)	Program Service Expenses (Required for 501(c)(3) and (4) organizations and 4947(a)(1) trusts, but optional for others )
a <u>See Statement 6</u> ----- ----- ----- ----- (Grants and allocations \$ <u>380,855.</u> ) If this amount includes foreign grants, check here . . ▶ <input type="checkbox"/>	22,230,761.
b ----- ----- ----- ----- (Grants and allocations \$ _____ ) If this amount includes foreign grants, check here . . ▶ <input type="checkbox"/>	
c ----- ----- ----- ----- (Grants and allocations \$ _____ ) If this amount includes foreign grants, check here . . ▶ <input type="checkbox"/>	
d ----- ----- ----- ----- (Grants and allocations \$ _____ ) If this amount includes foreign grants, check here . . ▶ <input type="checkbox"/>	
e Other program services . . . . . (Grants and allocations \$ _____ ) If this amount includes foreign grants, check here . . ▶ <input type="checkbox"/>	
<b>f Total of Program Service Expenses</b> (should equal line 44, column (B), Program services) . . . . . ▶	22,230,761.



**Part IV Balance Sheets** (See Instructions)

**Note:** Where required, attached schedules and amounts within the description column should be for end-of-year amounts only.

		(A) Beginning of year		(B) End of year
ASSETS	45 Cash – non-interest-bearing . . . . .	334,021.	45	908,532.
	46 Savings and temporary cash investments . . . . .	2,644,342.	46	649,318.
	47a Accounts receivable . . . . .	47a 4,908,764.		
	b Less: allowance for doubtful accounts . . . . .	47b	3,158,695.	47c 4,908,764.
	48a Pledges receivable . . . . .	48a 410,198.		
	b Less: allowance for doubtful accounts . . . . .	48b	679,356.	48c 410,198.
	49 Grants receivable . . . . .		49	
	50 Receivables from officers, directors, trustees, and key employees (attach schedule) . . . . .		50	
	51a Other notes & loans receivable (attach sch.) . . . . .	51a		
	b Less: allowance for doubtful accounts . . . . .	51b		51c
	52 Inventories for sale or use . . . . .		335,496.	52 337,709.
	53 Prepaid expenses and deferred charges . . . . .		855,608.	53 428,960.
	54 Investments – securities (attach schedule) See St. 7 <input type="checkbox"/> Cost <input checked="" type="checkbox"/> FMV		7,235,761.	54 11,491,479.
	55a Investments – land, buildings, & equipment: basis	55a 225,473.		
b Less: accumulated depreciation (attach schedule) . . . . . Statement . 8	55b 37,299.	191,722.	55c 188,174.	
56 Investments – other (attach schedule) . . . . .			56	
57a Land, buildings, and equipment: basis . . . . .	57a 1,063,406.			
b Less: accumulated depreciation (attach schedule) . . . . . Statement . 9	57b 637,532.	569,074.	57c 425,874.	
58 Other assets (describe ▶ See Statement 10)		40,041.	58 10,991.	
59 <b>Total assets</b> (must equal line 74). Add lines 45 through 58 . . . . .		16,044,116.	59 19,759,999.	
LIABILITIES	60 Accounts payable and accrued expenses . . . . .	1,388,151.	60	2,058,270.
	61 Grants payable . . . . .		61	
	62 Deferred revenue . . . . .	668,525.	62	41,382.
	63 Loans from officers, directors, trustees, and key employees (attach schedule) . . . . .		63	
	64a Tax-exempt bond liabilities (attach schedule) . . . . .		64a	
	b Mortgages and other notes payable (attach schedule) . . . . .		64b	
	65 Other liabilities (describe ▶ See Statement 11)		1,776,013.	65 1,760,534.
66 <b>Total liabilities.</b> Add lines 60 through 65. . . . .		3,832,689.	66 3,860,186.	
NET ASSETS OR FUND BALANCES	Organizations that follow SFAS 117, check here <input checked="" type="checkbox"/> and complete lines 67 through 69 and lines 73 and 74.			
	67 Unrestricted . . . . .		6,281,722.	67 12,025,915.
	68 Temporarily restricted . . . . .		3,324,842.	68 1,344,661.
	69 Permanently restricted . . . . .		2,604,863.	69 2,529,237.
	Organizations that do not follow SFAS 117, check here <input type="checkbox"/> and complete lines 70 through 74.			
	70 Capital stock, trust principal, or current funds . . . . .			70
	71 Paid-in or capital surplus, or land, building, and equipment fund . . . . .			71
	72 Retained earnings, endowment, accumulated income, or other funds . . . . .			72
	73 <b>Total net assets or fund balances</b> (add lines 67 through 69 or lines 70 through 72; column (A) must equal line 19; column (B) must equal line 21) . . . . .		12,211,427.	73 15,899,813.
	74 <b>Total liabilities and net assets/fund balances.</b> Add lines 66 and 73 . . . . .		16,044,116.	74 19,759,999.

**Part IV A Reconciliation of Revenue per Audited Financial Statements with Revenue per Return** (See instructions.)

<b>a</b>	Total revenue, gains, and other support per audited financial statements . . . . .		<b>a</b>	31,394,691.
<b>b</b>	Amounts included on line a but not on Part I, line 12:			
	1 Net unrealized gains on investments . . . . .	<b>b1</b>		-226,507.
	2 Donated services and use of facilities . . . . .	<b>b2</b>		150,670.
	3 Recoveries of prior year grants . . . . .	<b>b3</b>		
	4 Other (specify): <u>See Stmt 12</u>	<b>b4</b>		417,212.
	Add lines <b>b1</b> through <b>b4</b> . . . . .		<b>b</b>	341,375.
<b>c</b>	Subtract line <b>b</b> from line <b>a</b> . . . . .		<b>c</b>	31,053,316.
<b>d</b>	Amounts included on Part I, line 12, but not on line a:			
	1 Investment expenses not included on Part I, line 6b . . . . .	<b>d1</b>		
	2 Other (specify): -----	<b>d2</b>		
	Add lines <b>d1</b> and <b>d2</b> . . . . .		<b>d</b>	
<b>e</b>	<b>Total revenue</b> (Part I, line 12). Add lines <b>c</b> and <b>d</b> . . . . .		<b>e</b>	31,053,316.

**Part IV B Reconciliation of Expenses per Audited Financial Statements with Expenses per Return**

<b>a</b>	Total expenses and losses per audited financial statements . . . . .		<b>a</b>	27,706,304.
<b>b</b>	Amounts included on line a but not on Part I, line 17:			
	1 Donated services and use of facilities . . . . .	<b>b1</b>		150,670.
	2 Prior year adjustments reported on Part I, line 20. . . . .	<b>b2</b>		
	3 Losses reported on Part I, line 20. . . . .	<b>b3</b>		
	4 Other (specify): <u>See Stmt 13</u>	<b>b4</b>		417,211.
	Add lines <b>b1</b> through <b>b4</b> . . . . .		<b>b</b>	567,881.
<b>c</b>	Subtract line <b>b</b> from line <b>a</b> . . . . .		<b>c</b>	27,138,423.
<b>d</b>	Amounts included on Part I, line 17, but not on line a:			
	1 Investment expenses not included on Part I, line 6b . . . . .	<b>d1</b>		
	2 Other (specify): -----	<b>d2</b>		
	Add lines <b>d1</b> and <b>d2</b> . . . . .		<b>d</b>	
<b>e</b>	<b>Total expenses</b> (Part I, line 17). Add lines <b>c</b> and <b>d</b> . . . . .		<b>e</b>	27,138,423.

**Part IV C Current Officers, Directors, Trustees, and Key Employees** (List each person who was an officer, director, trustee, or key employee at any time during the year even if they were not compensated.) (See the instructions.)

(A) Name and address	(B) Title and average hours per week devoted to position	(C) Compensation (if not paid, enter -0-)	(D) Contributions to employee benefit plans and deferred compensation plans	(E) Expense account and other allowances
Ingrid E Newkirk 501 Front Street Norfolk, VA 23510	Pres Secy & Dir 40	31,923.	3,476.	0.
MaryBeth Sweetland 501 Front Street Norfolk, VA 23510	Vice President 40	68,547.	2,764.	0.
Michael Rodman 501 Front Street Norfolk, VA 23510	Treas & Dir 1	0.	0.	0.
Jeanne Roush 501 Front Street Norfolk, VA 23510	Director 1	0.	0.	0.
-----				
-----				
-----				



Part V-A Current Officers, Directors, Trustees, and Key Employees (continued)

Yes No

75a Enter the total number of officers, directors, and trustees permitted to vote on organization business as board meetings 3
75b Are any officers, directors, trustees, or key employees listed in Form 990, Part V-A, or highest compensated employees listed in Schedule A, Part I, or highest compensated professional and other independent contractors listed in Schedule A, Part II-A or II-B, related to each other through family or business relationships? If 'Yes,' attach a statement that identifies the individuals and explains the relationship(s)
75c Do any officers, directors, trustees, or key employees listed in form 990, Part V-A, or highest compensated employees listed in Schedule A, Part I, or highest compensated professional and other independent contractors listed in Schedule A, Part II-A or II-B, receive compensation from any other organizations, whether tax exempt or taxable, that are related to this organization through common supervision or common control?
Note. Related organizations include section 509(a)(3) supporting organizations.
If 'Yes,' attach a statement that identifies the individuals, explains the relationship between this organization and the other organization(s), and describes the compensation arrangements, including amounts paid to each individual by each related organization
75d Does the organization have a written conflict of interest policy?...

X
X
X

Part V-B Former Officers, Directors, Trustees, and Key Employees That Received Compensation or Other Benefits

(If any former officer, director, trustee, or key employee received compensation or other benefits (described below) during the year, list that person below and enter the amount of compensation or other benefits in the appropriate column. See the instructions.)

Table with 5 columns: (A) Name and address, (B) Loans and Advances, (C) Compensation, (D) Contributions to employee benefit plans and deferred compensation plans, (E) Expense account and other allowances. The table contains several rows with dashed lines for input.

Part VI Other Information (See the instructions.)

Yes No

76 Did the organization engage in any activity not previously reported to the IRS? If 'Yes,' attach a detailed description of each activity.
77 Were any changes made in the organizing or governing documents but not reported to the IRS? If 'Yes,' attach a conformed copy of the changes.
78a Did the organization have unrelated business gross income of \$1,000 or more during the year covered by this return?
78b If 'Yes,' has it filed a tax return on Form 990-T for this year?
79 Was there a liquidation, dissolution, termination, or substantial contraction during the year? If 'Yes,' attach a statement
80a Is the organization related (other than by association with a statewide or nationwide organization) through common membership, governing bodies, trustees, officers, etc, to any other exempt or nonexempt organization?
80b If 'Yes,' enter the name of the organization and check whether it is exempt or nonexempt.
81a Enter direct and indirect political expenditures. (See line 81 instructions.)
81b Did the organization file Form 1120-POL for this year?...

X
X
X
X
X
X

BAA



Part VI Other Information (continued)

82 a Did the organization receive donated services or the use of materials, equipment, or facilities at no charge or at substantially less than fair rental value? 82a X
b If 'Yes,' you may indicate the value of these items here. Do not include this amount as revenue in Part I or as an expense in Part II. (See instructions in Part III.) 82b 150,670.
83 a Did the organization comply with the public inspection requirements for returns and exemption applications? 83a X
b Did the organization comply with the disclosure requirements relating to quid pro quo contributions? 83b X
84 a Did the organization solicit any contributions or gifts that were not tax deductible? 84a X
b If 'Yes,' did the organization include with every solicitation an express statement that such contributions or gifts were not tax deductible? 84b N/A
85 501(c)(4), (5), or (6) organizations. a Were substantially all dues nondeductible by members? 85a N/A
b Did the organization make only in-house lobbying expenditures of \$2,000 or less? 85b N/A
c Dues, assessments, and similar amounts from members 85c N/A
d Section 162(e) lobbying and political expenditures 85d N/A
e Aggregate nondeductible amount of section 6033(e)(1)(A) dues notices 85e N/A
f Taxable amount of lobbying and political expenditures (line 85d less 85e) 85f N/A
g Does the organization elect to pay the section 6033(e) tax on the amount on line 85f? 85g N/A
h If section 6033(e)(1)(A) dues notices were sent, does the organization agree to add the amount on line 85f to its reasonable estimate of dues allocable to nondeductible lobbying and political expenditures for the following tax year? 85h N/A
86 501(c)(7) organizations. Enter: a Initiation fees and capital contributions included on line 12 86a N/A
b Gross receipts, included on line 12, for public use of club facilities 86b N/A
87 501(c)(12) organizations. Enter: a Gross income from members or shareholders 87a N/A
b Gross income from other sources. (Do not net amounts due or paid to other sources against amounts due or received from them) 87b N/A
88 At any time during the year, did the organization own a 50% or greater interest in a taxable corporation or partnership, or an entity disregarded as separate from the organization under Regulations sections 301.7701-2 and 301.7701-3? If 'Yes,' complete Part IX 88 X
89 a 501(c)(3) organizations. Enter: Amount of tax imposed on the organization during the year under: section 4911 0; section 4912 0; section 4955 0.
b 501(c)(3) and 501(c)(4) organizations. Did the organization engage in any section 4958 excess benefit transaction during the year or did it become aware of an excess benefit transaction from a prior year? If 'Yes,' attach a statement explaining each transaction 89b X
c Enter: Amount of tax imposed on the organization managers or disqualified persons during the year under sections 4912, 4955, and 4958 0.
d Enter. Amount of tax on line 89c, above, reimbursed by the organization 0.
90 a List the states with which a copy of this return is filed See Statement 14
b Number of employees employed in the pay period that includes March 12, 2005 (See instructions.) 90b 181
91 a The books are in care of The Corporation Telephone number (757) 622-7382
Located at 501 Front Street, Norfolk VA ZIP + 4 23510
b At any time during the calendar year, did the organization have an interest in or a signature or other authority over a financial account in a foreign country (such as a bank account, securities account, or other financial account)? 91b X
If 'Yes,' enter the name of the foreign country.
See the instructions for exceptions and filing requirements for Form TD F 90-22.1, Report of Foreign Bank and Financial Statements
c At any time during the calendar year, did the organization maintain an office outside of the United States? 91c X
If 'Yes,' enter the name of the foreign country.
92 Section 4947(a)(1) nonexempt charitable trusts filing Form 990 in lieu of Form 1041 - Check here. N/A
and enter the amount of tax-exempt interest received or accrued during the tax year 92 N/A



**Part VII Analysis of Income-Producing Activities** (See the instructions.)

Note: Enter gross amounts unless otherwise indicated.

	Unrelated business income		Excluded by section 512, 513, or 514		(E) Related or exempt function income
	(A) Business code	(B) Amount	(C) Exclusion code	(D) Amount	
93 Program service revenue:					
a Advertising revenue	900004	91,561.			
b Conferences					29,240.
c Spay/Neuter Program					430,211.
d					
e					
f Medicare/Medicaid payments					
g Fees & contracts from government agencies					
94 Membership dues and assessments					
95 Interest on savings & temporary cash invmnts			14	292,379.	
96 Dividends & interest from securities			14	109,832.	
97 Net rental income or (loss) from real estate:					
a debt-financed property					
b not debt-financed property			16	-6,103.	
98 Net rental income or (loss) from pers prop.					
99 Other investment income					
100 Gain or (loss) from sales of assets other than inventory			18	-337,618.	
101 Net income or (loss) from special events					3,726.
102 Gross profit or (loss) from sales of inventory	454110	109,887.			539,625.
103 Other revenue: a					
b Miscellaneous Income			1	22,888.	
c Royalties			15	99,121.	
d					
e					
104 Subtotal (add columns (B), (D), and (E))		201,448.		180,499.	1,002,802.
105 Total (add line 104, columns (B), (D), and (E))					1,384,749.

Note: Line 105 plus line 1d, Part I, should equal the amount on line 12, Part I.

**Part VIII Relationship of Activities to the Accomplishment of Exempt Purposes** (See the instructions.)

Line No.	Explain how each activity for which income is reported in column (E) of Part VII contributed importantly to the accomplishment of the organization's exempt purposes (other than by providing funds for such purposes).
	See Statement 15

**Part IX Information Regarding Taxable Subsidiaries and Disregarded Entities** (See the instructions.)

(A) Name, address, and EIN of corporation, partnership, or disregarded entity	(B) Percentage of ownership interest	(C) Nature of activities	(D) Total income	(E) End-of-year assets
N/A	%			
	%			
	%			
	%			

**Part X Information Regarding Transfers Associated with Personal Benefit Contracts** (See the instructions.)

- a Did the organization, during the year, receive any funds, directly or indirectly, to pay premiums on a personal benefit contract?  Yes  No
- b Did the organization, during the year, pay premiums, directly or indirectly, on a personal benefit contract?  Yes  No

Note: If 'Yes' to (b), file Form 8870 and Form 4720 (see instructions).

Under penalties of perjury, I declare that I have examined this return, including accompanying schedules and statements, and to the best of my knowledge and belief, it is true, correct, and complete. Declaration of preparer (other than officer) is based on all information of which preparer has any knowledge.

**Please Sign Here**

Signature of officer: Ingrid Nawlich Date: 12/13/06  
 Type or print name and title: Ingrid Nawlich President

**Paid Preparer's Use Only**

Preparer's signature: Sean J. Rosenberg CPA Date: 12/11/2006 Check if self-employed:  Preparer's SSN or PTIN (See General Instruction W): N/A

Firm's name (or yours if self-employed), address, and ZIP + 4: Saggar & Rosenberg, P.C.  
One Church Street, Suite 204  
Rockville, MD 20850 EIN: N/A Phone no: 301 738-9040



**SCHEDULE A**  
(Form 990 or 990-EZ)

**Organization Exempt Under  
Section 501(c)(3)**

OMB No. 1545-0047

(Except Private Foundation) and Section 501(e), 501(f), 501(k),  
501(n), or 4947(a)(1) Nonexempt Charitable Trust

**2005**

Department of the Treasury  
Internal Revenue Service

Supplementary Information — (See separate instructions.)  
▶ **MUST be completed by the above organizations and attached to their Form 990 or 990-EZ.**

Name of the organization: **People for the Ethical Treatment of Animals, Inc.** Employer identification number: **52-1218336**

**Part I Compensation of the Five Highest Paid Employees Other Than Officers, Directors, and Trustees**  
(See instructions. List each one. If there are none, enter 'None.')

(a) Name and address of each employee paid more than \$50,000	(b) Title and average hours per week devoted to position	(c) Compensation	(d) Contributions to employee benefit plans and deferred compensation	(e) Expense account and other allowances
Sara Taylor 501 Front St Norfolk, VA 23510	Veterinarian 40	108,418.	1,750.	0.
Dan Matthews 501 Front St Norfolk, VA 23510	VP Campaigns 40	70,997.	2,439.	0.
Debra Durham 501 Front St Norfolk, VA 23510	Primate Special 40	65,175.	1,789.	0.
Dawn Carr 501 Front St Norfolk, VA 23510	Media Coord 40	64,423.	3,769.	0.
Michael McGraw 501 Front St Norfolk, VA 23510	Dir Media Rel 40	68,135.	2,300.	0.
Total number of other employees paid over \$50,000	8			

**Part II A Compensation of the Five Highest Paid Independent Contractors for Professional Services**  
(See instructions. List each one (whether individuals or firms) If there are none, enter 'None.')

(a) Name and address of each independent contractor paid more than \$50,000	(b) Type of service	(c) Compensation
Hirschkop & Assoc. 108 N Columbus Street Alexandria, VA 22314	Attorneys	674,912.
Zuckerman, Spaeder LLP 1800 M Street, NW, Suite 1000 Washington, DC 20036	Attorneys	405,781.
Share Group, Inc PO Box 55183 Boston, MA 02205	Professional Fundrai	314,555.
Telefund PO Box 2366 Denver, CO 80201	Professional Fundrai	255,430.
Gilbert & Tobin GPO Box 3810 Sydney, NSW 2001 Australia	Attorneys	223,848.
Total number of others receiving over \$50,000 for professional services	4	

**Part II B Compensation of the Five Highest Paid Independent Contractors for Other Services**  
(List each contractor who performed services other than professional services, whether individuals or firms. If there are none, enter 'None.' See instructions.)

(a) Name and address of each independent contractor paid more than \$50,000	(b) Type of service	(c) Compensation
Foundation to Support Animal Protection 501 Front St Norfolk, VA 23510	Supporting Services	4,848,277.
Live Animals Inc 1655 26 St, 2nd Fl Santa Monica, CA 90404	Event Production	657,089.
Lawrence & Beaven 34 Marschall St London, W1V 1LL United Kingdom	Design	363,596.
Total number of other contractors receiving over \$50,000 for other services	0	



Part III Statements About Activities (See instructions.)

Table with 3 columns: Question, Yes, No. Contains questions 1 through 4b regarding lobbying activities, property transactions, and compensation.

Part IV Reason for Non-Private Foundation Status (See instructions.)

The organization is not a private foundation because it is: (Please check only ONE applicable box.)

- 5 A church, convention of churches, or association of churches. Section 170(b)(1)(A)(i).
6 A school. Section 170(b)(1)(A)(ii). (Also complete Part V.)
7 A hospital or a cooperative hospital service organization. Section 170(b)(1)(A)(iii).
8 A Federal, state, or local government or governmental unit. Section 170(b)(1)(A)(v).
9 A medical research organization operated in conjunction with a hospital. Section 170(b)(1)(A)(iii). Enter the hospital's name, city, and state
10 An organization operated for the benefit of a college or university owned or operated by a governmental unit. Section 170(b)(1)(A)(iv). (Also complete the Support Schedule in Part IV-A.)
11a [X] An organization that normally receives a substantial part of its support from a governmental unit or from the general public. Section 170(b)(1)(A)(vi). (Also complete the Support Schedule in Part IV-A.)
11b A community trust. Section 170(b)(1)(A)(vi). (Also complete the Support Schedule in Part IV-A.)
12 An organization that normally receives: (1) more than 33-1/3% of its support from contributions, membership fees, and gross receipts from activities related to its charitable, etc, functions - subject to certain exceptions, and (2) no more than 33-1/3% of its support from gross investment income and unrelated business taxable income (less section 511 tax) from businesses acquired by the organization after June 30, 1975. See section 509(a)(2). (Also complete the Support Schedule in Part IV-A.)
13 An organization that is not controlled by any disqualified persons (other than foundation managers) and supports organizations described in: (1) lines 5 through 12 above; or (2) section 501(c)(4), (5), or (6), if they meet the test of section 509(a)(2). Check the box that describes the type of supporting organization: Type 1 Type 2 Type 3

Provide the following information about the supported organizations. (See instructions.)

Table with 2 columns: (a) Name(s) of supported organization(s), (b) Line number from above.

- 14 An organization organized and operated to test for public safety. Section 509(a)(4). (See instructions.)



**Part IV-A Support Schedule** (Complete only if you checked a box on line 10, 11, or 12.) *Use cash method of accounting.*

**Note:** You may use the worksheet in the instructions for converting from the accrual to the cash method of accounting.

Calendar year (or fiscal year beginning in)	(a) 2004	(b) 2003	(c) 2002	(d) 2001	(e) Total
<b>15</b> Gifts, grants, and contributions received. (Do not include unusual grants. See line 28.)	23,607,554.	29,583,419.	21,296,702.	16,309,019.	90,796,694.
<b>16</b> Membership fees received.					0.
<b>17</b> Gross receipts from admissions, merchandise sold or services performed, or furnishing of facilities in any activity that is related to the organization's charitable, etc. purpose.	1,625,408.	1,052,691.	867,682.	1,293,719.	4,839,500.
<b>18</b> Gross income from interest, dividends, amounts received from payments on securities loans (section 512(a)(5)), rents, royalties, and unrelated business taxable income (less section 511 taxes) from businesses acquired by the organization after June 30, 1975.	487,656.	386,473.	155,006.	258,451.	1,287,586.
<b>19</b> Net income from unrelated business activities not included in line 18.					0.
<b>20</b> Tax revenues levied for the organization's benefit and either paid to it or expended on its behalf.					0.
<b>21</b> The value of services or facilities furnished to the organization by a governmental unit without charge. Do not include the value of services or facilities generally furnished to the public without charge.					0.
<b>22</b> Other income. Attach a schedule. Do not include gain or (loss) from sale of capital assets.					0.
<b>23</b> Total of lines 15 through 22	25,720,618.	31,022,583.	22,319,390.	17,861,189.	96,923,780.
<b>24</b> Line 23 minus line 17	24,095,210.	29,969,892.	21,451,708.	16,567,470.	92,084,280.
<b>25</b> Enter 1% of line 23	257,206.	310,226.	223,194.	178,612.	
<b>26 Organizations described on lines 10 or 11:</b>					
<b>a</b> Enter 2% of amount in column (e), line 24					<b>26a</b> 1,841,686.
<b>b</b> Prepare a list for your records to show the name of and amount contributed by each person (other than a governmental unit or publicly supported organization) whose total gifts for 2001 through 2004 exceeded the amount shown in line 26a. Do not file this list with your return. Enter the total of all these excess amounts.					<b>26b</b> 18,816,874.
<b>c</b> Total support for section 509(a)(1) test: Enter line 24, column (e)					<b>26c</b> 92,084,280.
<b>d</b> Add: Amounts from column (e) for lines:	18	1,287,586.	19		
	22		26b	18,816,874.	<b>26d</b> 20,104,460.
<b>e</b> Public support (line 26c minus line 26d total)					<b>26e</b> 71,979,820.
<b>f</b> Public support percentage (line 26e (numerator) divided by line 26c (denominator))					<b>26f</b> 78.17 %
<b>27 Organizations described on line 12:</b> N/A					
<b>a</b> For amounts included in lines 15, 16, and 17 that were received from a 'disqualified person,' prepare a list for your records to show the name of, and total amounts received in each year from, each 'disqualified person.' Do not file this list with your return. Enter the sum of such amounts for each year:	(2004)	(2003)	(2002)	(2001)	
<b>b</b> For any amount included in line 17 that was received from each person (other than 'disqualified persons'), prepare a list for your records to show the name of, and amount received for each year, that was more than the larger of (1) the amount on line 25 for the year or (2) \$5,000. (Include in the list organizations described in lines 5 through 11b, as well as individuals.) Do not file this list with your return. After computing the difference between the amount received and the larger amount described in (1) or (2), enter the sum of these differences (the excess amounts) for each year:	(2004)	(2003)	(2002)	(2001)	
<b>c</b> Add: Amounts from column (e) for lines:	15		16		
	17	20	21		<b>27c</b>
<b>d</b> Add: Line 27a total ... and line 27b total ...					<b>27d</b>
<b>e</b> Public support (line 27c total minus line 27d total)					<b>27e</b>
<b>f</b> Total support for section 509(a)(2) test: Enter amount from line 23, column (e)					<b>27f</b>
<b>g</b> Public support percentage (line 27e (numerator) divided by line 27f (denominator))					<b>27g</b> %
<b>h</b> Investment income percentage (line 18, column (e) (numerator) divided by line 27f (denominator))					<b>27h</b> %

**28 Unusual Grants:** For an organization described in line 10, 11, or 12 that received any unusual grants during 2001 through 2004, prepare a list for your records to show, for each year, the name of the contributor, the date and amount of the grant, and a brief description of the nature of the grant. Do not file this list with your return. Do not include these grants in line 15.



Part V Private School Questionnaire (See instructions.) (To be completed ONLY by schools that checked the box on line 6 in Part IV)

N/A

29 Does the organization have a racially nondiscriminatory policy toward students by statement in its charter, bylaws, other governing instrument, or in a resolution of its governing body?

Table with 3 columns: Question ID, Yes, No. Row 29: 29, [blank], [blank]

30 Does the organization include a statement of its racially nondiscriminatory policy toward students in all its brochures, catalogues, and other written communications with the public dealing with student admissions, programs, and scholarships?

Table with 3 columns: Question ID, Yes, No. Row 30: 30, [blank], [blank]

31 Has the organization publicized its racially nondiscriminatory policy through newspaper or broadcast media during the period of solicitation for students, or during the registration period if it has no solicitation program, in a way that makes the policy known to all parts of the general community it serves? If 'Yes,' please describe; if 'No,' please explain. (If you need more space, attach a separate statement.)

Table with 3 columns: Question ID, Yes, No. Row 31: 31, [blank], [blank]

32 Does the organization maintain the following:

- a Records indicating the racial composition of the student body, faculty, and administrative staff?
b Records documenting that scholarships and other financial assistance are awarded on a racially nondiscriminatory basis?
c Copies of all catalogues, brochures, announcements, and other written communications to the public dealing with student admissions, programs, and scholarships?
d Copies of all material used by the organization or on its behalf to solicit contributions?

Table with 3 columns: Question ID, Yes, No. Rows 32a, 32b, 32c, 32d: 32a, 32b, 32c, 32d, [blank], [blank]

If you answered 'No' to any of the above, please explain (If you need more space, attach a separate statement )

33 Does the organization discriminate by race in any way with respect to:

- a Students' rights or privileges?
b Admissions policies?
c Employment of faculty or administrative staff?
d Scholarships or other financial assistance?
e Educational policies?
f Use of facilities?
g Athletic programs?
h Other extracurricular activities?

Table with 3 columns: Question ID, Yes, No. Rows 33a, 33b, 33c, 33d, 33e, 33f, 33g, 33h: 33a, 33b, 33c, 33d, 33e, 33f, 33g, 33h, [blank], [blank]

If you answered 'Yes' to any of the above, please explain. (If you need more space, attach a separate statement.)

34a Does the organization receive any financial aid or assistance from a governmental agency?

Table with 3 columns: Question ID, Yes, No. Row 34a: 34a, [blank], [blank]

b Has the organization's right to such aid ever been revoked or suspended? If you answered 'Yes' to either 34a or b, please explain using an attached statement.

Table with 3 columns: Question ID, Yes, No. Row 34b: 34b, [blank], [blank]

35 Does the organization certify that it has complied with the applicable requirements of sections 4.01 through 4.05 of Rev Proc 75-50, 1975-2 C B. 587, covering racial nondiscrimination? If 'No,' attach an explanation.

Table with 3 columns: Question ID, Yes, No. Row 35: 35, [blank], [blank]



**Part VI-A Lobbying Expenditures by Electing Public Charities** (See instructions.)  
(To be completed **ONLY** by an eligible organization that filed Form 5768)

Check  **a** if the organization belongs to an affiliated group. Check  **b** if you checked 'a' and 'limited control' provisions apply.

<b>Limits on Lobbying Expenditures</b> (The term 'expenditures' means amounts paid or incurred.)		(a) Affiliated group totals	(b) To be completed for ALL electing organizations
<b>36</b>	Total lobbying expenditures to influence public opinion (grassroots lobbying) . . . . .	<b>36</b>	41,679.
<b>37</b>	Total lobbying expenditures to influence a legislative body (direct lobbying) . . . . .	<b>37</b>	16,694.
<b>38</b>	Total lobbying expenditures (add lines 36 and 37) . . . . .	<b>38</b> 0.	58,373.
<b>39</b>	Other exempt purpose expenditures . . . . .	<b>39</b>	27,165,692.
<b>40</b>	Total exempt purpose expenditures (add lines 38 and 39) . . . . .	<b>40</b> 0.	27,224,065.
<b>41</b>	Lobbying nontaxable amount. Enter the amount from the following table – If the amount on line 40 is –                      The lobbying nontaxable amount is – Not over \$500,000 . . . . . 20% of the amount on line 40 . . . . . Over \$500,000 but not over \$1,000,000                      \$100,000 plus 15% of the excess over \$500,000 Over \$1,000,000 but not over \$1,500,000 . . . . . \$175,000 plus 10% of the excess over \$1,000,000 Over \$1,500,000 but not over \$17,000,000 . . . . . \$225,000 plus 5% of the excess over \$1,500,000 Over \$17,000,000 . . . . . \$1,000,000	<b>41</b>	1,000,000.
<b>42</b>	Grassroots nontaxable amount (enter 25% of line 41) . . . . .	<b>42</b> 0.	250,000.
<b>43</b>	Subtract line 42 from line 36. Enter -0- if line 42 is more than line 36 . . . . .	<b>43</b> 0.	0.
<b>44</b>	Subtract line 41 from line 38. Enter -0- if line 41 is more than line 38 . . . . .	<b>44</b> 0.	0.

**Caution:** If there is an amount on either line 43 or line 44, you must file Form 4720.

**4-Year Averaging Period Under Section 501(h)**

(Some organizations that made a section 501(h) election do not have to complete all of the five columns below.  
See the instructions for lines 45 through 50.)

Calendar year (or fiscal year beginning in) ▶	Lobbying Expenditures During 4-Year Averaging Period				
	(a) 2005	(b) 2004	(c) 2003	(d) 2002	(e) Total
<b>45</b> Lobbying nontaxable amount . . . . .	1,000,000.	1,000,000.	1,000,000.	1,000,000.	4,000,000.
<b>46</b> Lobbying ceiling amount (150% of line 45(e)) . . . . .					6,000,000.
<b>47</b> Total lobbying expenditures . . . . .	58,373.	33,459.	87,295.	98,074.	277,201.
<b>48</b> Grassroots non-taxable amount . . . . .	250,000.	250,000.	250,000.	250,000.	1,000,000.
<b>49</b> Grassroots ceiling amount (150% of line 48(e)) . . . . .					1,500,000.
<b>50</b> Grassroots lobbying expenditures . . . . .	41,679.	21,148.	25,648.	21,707.	110,182.

**Part VI-B Lobbying Activity by Nonelecting Public Charities** (See instructions.)  
(For reporting only by organizations that did not complete Part VI-A)

N/A

During the year, did the organization attempt to influence national, state or local legislation, including any attempt to influence public opinion on a legislative matter or referendum, through the use of:	Yes	No	Amount
<b>a</b> Volunteers . . . . .			
<b>b</b> Paid staff or management (Include compensation in expenses reported on lines <b>c</b> through <b>h</b> .) . . . . .			
<b>c</b> Media advertisements . . . . .			
<b>d</b> Mailings to members, legislators, or the public . . . . .			
<b>e</b> Publications, or published or broadcast statements . . . . .			
<b>f</b> Grants to other organizations for lobbying purposes . . . . .			
<b>g</b> Direct contact with legislators, their staffs, government officials, or a legislative body . . . . .			
<b>h</b> Rallies, demonstrations, seminars, conventions, speeches, lectures, or any other means . . . . .			
<b>i</b> Total lobbying expenditures (add lines <b>c</b> through <b>h</b> .) . . . . .			

If 'Yes' to any of the above, also attach a statement giving a detailed description of the lobbying activities.

**Part VII** Information Regarding Transfers To and Transactions and Relationships With Noncharitable Exempt Organizations (See instructions)

51 Did the reporting organization directly or indirectly engage in any of the following with any other organization described in section 501(c) of the Code (other than section 501(c)(3) organizations) or in section 527, relating to political organizations?

**a** Transfers from the reporting organization to a noncharitable exempt organization of:

	Yes	No
<b>51 a (i)</b>		X
<b>a (ii)</b>		X
<b>b (i)</b>		X
<b>b (ii)</b>		X
<b>b (iii)</b>		X
<b>b (iv)</b>		X
<b>b (v)</b>		X
<b>b (vi)</b>		X
<b>c</b>		X

(i) Cash . . . . .

(ii) Other assets . . . . .

**b** Other transactions:

(i) Sales or exchanges of assets with a noncharitable exempt organization . . . . .

(ii) Purchases of assets from a noncharitable exempt organization . . . . .

(iii) Rental of facilities, equipment, or other assets . . . . .

(iv) Reimbursement arrangements . . . . .

(v) Loans or loan guarantees . . . . .

(vi) Performance of services or membership or fundraising solicitations . . . . .

**c** Sharing of facilities, equipment, mailing lists, other assets, or paid employees . . . . .

**d** If the answer to any of the above is 'Yes,' complete the following schedule. Column (b) should always show the fair market value of the goods, other assets, or services given by the reporting organization. If the organization received less than fair market value in any transaction or sharing arrangement, show in column (d) the value of the goods, other assets, or services received:

(a) Line no.	(b) Amount involved	(c) Name of noncharitable exempt organization	(d) Description of transfers, transactions, and sharing arrangements
N/A			

52a Is the organization directly or indirectly affiliated with, or related to, one or more tax-exempt organizations described in section 501(c) of the Code (other than section 501(c)(3)) or in section 527? . . . . .  Yes  No

**b** If 'Yes,' complete the following schedule:

(a) Name of organization	(b) Type of organization	(c) Description of relationship
N/A		



**Statement 1**  
**Form 990, Part I, Line 8**  
**Net Gain (Loss) from Noninventory Sales**

Publicly Traded Securities

Gross Sales Price: 7,263,856.  
 Cost or Other Basis: 7,595,933.

Total Gain (Loss) Publicly Traded Securities \$ -332,077.

Other Assets

Description:	Equipment	
Date Acquired:	Various	
How Acquired:	Donated	
Date Sold:	Various	
To Whom Sold:	Various	
Gross Sales Price:		26,931.
Cost or Other Basis:		51,723.
Depreciation:		19,251.

Gain (Loss) -5,541.

Total Gain (Loss) Other Assets \$ -5,541.

Total Net Gain (Loss) From Noninventory Sales \$ -337,618.

**Statement 2**  
**Form 990, Part I, Line 9**  
**Net Income (Loss) from Special Events**

Special Events	Gross Receipts	Less Contributions	Gross Revenue	Less Direct Expenses	Net Income (Loss)
25th Anniversary Gala	1,717,702.	0.	1,717,702.	1,713,976.	3,726.
Total	<u>\$ 1717702.</u>	<u>\$ 0.</u>	<u>\$ 1717702.</u>	<u>\$ 1713976.</u>	<u>\$ 3,726.</u>

**Statement 3**  
**Form 990, Part I, Line 10**  
**Gross Profit (Loss) From Sales Of Inventory**

Gross Sales.....	\$ 871,874.
Gross Sales.....	177,545.
Gross Sales.....	<u>\$ 1,049,419.</u>
Less Returns & Allowances .....	0.
Net Sales.....	\$ 1,049,419.
Less Cost Of Goods Sold .....	399,907.
Gross Profit From Sales Of Inventory .....	<u>\$ 649,512.</u>

**Statement 4**  
**Form 990, Part I, Line 20**  
**Other Changes in Net Assets or Fund Balances**

Unrealized Losses on Investments .....		\$ -226,507.	
	Total	\$	<u><u>-226,507.</u></u>

**Statement 5**  
**Form 990, Part II, Line 22**  
**Grants and Allocations**

Cash Grants and Allocations

Class of Activity:	Various		
Donee's Name:	See attached statement 16.		
Relationship of Donee:	None		
Amount Given:		\$	370,999.
Total Cash Grants and Allocations			\$ <u>370,999.</u>

Noncash Grants and Allocations

Class of Activity:	Various		
Donee's Name:	See attached statement 16.		
Relationship of Donee:	None		
Description of Property:	Video Equipment		
Date of Gift:	Various		
Book Value:	9,856.		
Method Used to Determine BV:	Cost less depreciation		
Fair Market Value:		\$	9,856.
Method Used to Determine FMV:	Cost less depreciation		
Total Noncash Grants and Allocations			\$ <u>9,856.</u>
Total Grants and Allocations			\$ <u><u>380,855.</u></u>

**Statement 6**  
**Form 990, Part III, Line a**  
**Statement of Program Service Accomplishments**

<u>Description</u>	<u>Grants and</u>	<u>Program</u>
	<u>Allocations</u>	<u>Service</u>
		<u>Expenses</u>
PUBLIC OUTREACH & EDUCATION - PETA conducts educational campaigns and publishes materials that are distributed to students, teachers, the general public, and supporters. These efforts include materials made available through our programs for younger children, high school and college students, and educators, as well as publications including factsheets, booklets, fliers, posters, and publication of PETA's magazine Animal Times. Campaigns involved renowned celebrities, extensive media attention, interactive Web site features resulting in skyrocketing traffic, and public service announcements typically placed for free in high-exposure outlets.	1,900.	7,373,989.



Statement 6 (continued)  
 Form 990, Part III, Line a  
 Statement of Program Service Accomplishments

Description	Grants and Allocations	Program Service Expenses
Includes Foreign Grants: Yes		
<p>RESEARCH, INVESTIGATIONS &amp; RESCUE - PETA receives complaints of cruelty to animals, rescues and obtains care for abused, neglected and at-risk animals, investigates cruelty cases, gathers evidence of law violations, and takes action to ensure enforcement of laws and regulations to protect the animals concerned. We publicized the results of our investigations into both the Australian live export trade, where sheep shipped to Egypt for slaughter were kicked, beaten, bound up and thrown into the trunks of cars, and killed in prolonged and cruel ways that are illegal in other countries, and a Covance animal-testing laboratory where workers hit, choked, and psychologically tormented monkeys. We worked with many prosecutors to make sure that animal abusers, including those who tortured family dogs and cats, were held responsible for their actions. We funded a highly successful spay/neuter program that made surgeries available at little to no cost to disadvantaged animal guardians, preventing thousands of unwanted litters and providing relief to overburdened, government run animal control offices and local animal shelters. We also sent several teams equipped with vans, boats, and rescue gear to Louisiana in the aftermath of Hurricane Katrina and rescued hundreds of animals, including 32 dogs we brought back to our headquarters and either reunited with their guardians or placed in new permanent loving homes.</p>	174,458.	6,951,206.
Includes Foreign Grants: Yes		
<p>INTERNATIONAL GRASSROOTS CAMPAIGNS - PETA organizes campaigns to inform the public about how animals are abused in, among other places, the meat, clothing, experimentation, and entertainment industries. PETA persuaded Polo Ralph Lauren, J. Crew, and Kenneth Cole to stop carrying fur items, saving animals from cruel deaths such as anal electrocution and live skinning; caused Welch's juice company to drop deadly animal tests; succeeded in getting retailers CVS, Rite Aid, Safeway, and Albertson's to end the sale of glue traps, sparing animals long, painful deaths from dehydration, suffocation, or starvation; helped save ducks from immeasurable suffering by participating in the successful campaign to make Chicago the first place in the nation to ban foie gras; promoted cruelty-free diets through our "Sexiest Vegetarian Alive" contests, garnering international media attention; and saved thousands of animals from enormous suffering by helping to convince Whole Foods Market, the country's largest natural foods grocery chain, to stop selling live lobsters and crabs in all its stores.</p>	204,497.	7,099,320.
Includes Foreign Grants: Yes		
<p>CRUELTY FREE MERCHANDISE PROGRAM - PETA encourages and facilitates cruelty-free living by providing educational materials and consumer products, such as cosmetics and household cleaners that are not tested on animals, animal</p>		

**Statement 6 (continued)**  
**Form 990, Part III, Line a**  
**Statement of Program Service Accomplishments**

Description	Grants and Allocations	Program Service Expenses
care products, message T-shirts, educational videos and books, animal rescue equipment, and campaign materials used by concerned citizens around the world. These items are available through our online PETA Mall, PETA Catalog, and PETA Bookstore.		806,246.
Includes Foreign Grants: No		
	<u>\$ 380,855.</u>	<u>\$ 22230761.</u>

**Statement 7**  
**Form 990, Part IV, Line 54**  
**Investments - Securities**

Corporate Stocks	Valuation Method	Amount
Corporate Stocks	Market Value	\$ 315,704.
	Total	\$ 315,704.

Corporate Bonds	Valuation Method	Amount
Corporate Bonds	Market Value	96,109.
	Total	\$ 96,109.

Other Publicly Traded Securities	Valuation Method	Amount
Other Publicly Traded Securities	Market Value	58,034.
	Total	\$ 58,034.

Other Securities	Valuation Method	Amount
Other Investments	Cost	1,048,411.
	Total	\$ 1,048,411.

U.S. Government Obligations	Valuation Method	Amount
Govt Obligations	Market Value	9,973,221.
	Total	\$ 9,973,221.



**Statement 7 (continued)**  
**Form 990, Part IV, Line 54**  
**Investments - Securities**

<u>U.S. Government Obligations</u>	<u>Valuation Method</u>	<u>Amount</u>
Total Investments - Securities		<u>\$ 11,491,479.</u>

**Statement 8**  
**Form 990, Part IV, Line 55b**  
**Investments - Land, Buildings, and Equipment**

<u>Category</u>	<u>Basis</u>	<u>Accum. Deprec.</u>	<u>Book Value</u>
Furniture and Fixtures	\$ 360.	\$ 360.	\$ 0.
Buildings	133,943.	36,939.	97,004.
Land	91,170.		91,170.
Total	<u>\$ 225,473.</u>	<u>\$ 37,299.</u>	<u>\$ 188,174.</u>

**Statement 9**  
**Form 990, Part IV, Line 57**  
**Land, Buildings, and Equipment**

<u>Category</u>	<u>Basis</u>	<u>Accum. Deprec.</u>	<u>Book Value</u>
Automobiles / Transportation Equipment	\$ 469,855.	\$ 366,230.	\$ 103,625.
Furniture and Fixtures	397,760.	220,006.	177,754.
Buildings	192,791.	51,296.	141,495.
Land	3,000.		3,000.
Total	<u>\$ 1,063,406.</u>	<u>\$ 637,532.</u>	<u>\$ 425,874.</u>

**Statement 10**  
**Form 990, Part IV, Line 58**  
**Other Assets**

Deposits . . . . .	\$ 10,991.
Total	<u>\$ 10,991.</u>

**Statement 11**  
**Form 990, Part IV, Line 65**  
**Other Liabilities**

Annuities Payable . . . . .	\$ 1,760,534.
Total	<u>\$ 1,760,534.</u>

**Statement 12**  
**Form 990, Part IV-A, Line b(4)**  
**Other Amounts**

Cost of goods sold .....	\$ 399,907.
Rental expenses.....	17,304.
Rounding .....	1.
<b>Total</b>	<b>\$ <u>417,212.</u></b>

**Statement 13**  
**Form 990, Part IV-B, Line b(4)**  
**Other Amounts**

Cost of goods sold .....	\$ 399,907.
Rental expenses. ....	17,304.
<b>Total</b>	<b>\$ <u>417,211.</u></b>

**Statement 14**  
**Form 990, Part VI, Line 90a**  
**List of States which this Return is Filed**

AK AZ AR CA CO CT FL GA IL KS KY LA ME MD MA MI MN MS MO NH NJ NM NY NC ND OH OK  
 OR PA RI SC TN UT VA WA WV WI

**Statement 15**  
**Form 990, Part VIII**  
**Relationship of Activities to the Accomplishment of Exempt Purposes**

Line #	Explanation of Activities
93c	Mobile spay/neuter program provides low-cost, and often free, spay/neuter and wellness services to predominantly low income persons, thereby reducing the number of unwanted animals that create large overpopulation problems.
102	Sales of educational materials and cruelty free products increase public awareness and promote animal rights.
93b	Conferences relate to animal rights, and the fees collected are used to promote animal rights.
101	The gala publicized PETA's accomplishments.



People for the Ethical Treatment of Animals, Inc. 52-1218336

Statement 16

PART II - Line 22: Donations to Other Organizations 2005

Date	Recipient	Purpose	Amount
<b>Cash Contributions</b>			
08/01/05	Helga Tacreiter P O Box 227 Shiloh, NJ 08353	To Support Program Activities	\$ 500 00
08/02/05	Group Education to Protect and Defend Animals 1629 Montrose Way San Jose, CA 95124-4831	To Support Program Activities	\$ 5,000 00
08/03/05	Animal Care in Egypt Kingston, Hever Rd , Bough Beech Edenbridge, Kent, TN8 7NU, UK	To Support Program Activities	\$ 300.00
08/04/05	PETA India 301 West Wind II Gandhigram Rd, Juhu Mumbai, India 400 049	To Support Program Activities	\$ 25,000.00
08/16/05	Eric Zamost PO Box 3434 Santa Cruz, CA 95063	To Support Program Activities	\$ 1,000 00
08/22/05	PETA India 301 West Wind II Gandhigram Rd, Juhu Mumbai, India 400 049	To Support Program Activities	\$ 50,000 00
08/23/05	Virginia Beach SPCA 3040 Holland Road Virginia Beach, 23453	To Support Program Activities	\$ 30 00
08/26/05	Bjorn Ekwall Memorial Fund Stockholm Univ. Dept. of Neurochemistry and Neurotoxicity 106 91, Stockholm, Sweden	To Support Program Activities	\$ 5,000 00
08/31/05	Virginia Beach SPCA 3040 Holland Road Virginia Beach, 23453	To Support Program Activities	\$ 70 00
09/01/05	Helga Tacreiter P O Box 227 Shiloh, NJ 08353	To Support Program Activities	\$ 500 00
09/07/05	Animalisti Italiani ONLUS Via degli Ontani, 32 00172 - Rome, Italy	To Support Program Activities	\$ 5,000 00
09/14/05	International QSAR Foundation to Reduce Animal Testing 1501 West Knife River Road Two Harbors, MN 55616	To Support Program Activities	\$ 120,000 00
09/14/05	AHPPA Aptdo 73-3000 Heredia de Costa Rica	To Support Program Activities	\$ 60 00
09/21/05	Colorado Wolf and Wildlife Center P.O. Box 476 Florissant, CO 8816	To Support Program Activities	\$ 500.00
09/21/05	The Prairie Dog Coalition 2525 Arapahoe, #e4-527 Boulder, CO 80302	To Support Program Activities	\$ 200.00
09/29/05	Kathmandu Animal Treatment Centre Chapali Gaon, Budhanikantha Kathmandu, Nepal	To Support Program Activities	\$ 240.91
10/01/05	Helga Tacreiter P O. Box 227 Shiloh, NJ 08353	To Support Program Activities	\$ 500 00
10/04/05	Clearwater Wildlife Sanctuary P.O. Box 2334 Covington, LA 70435	To Support Program Activities	\$ 2,000 00

People for the Ethical Treatment of Animals, Inc. 52-1218336  
Statement 16

PART II - Line 22: Donations to Other Organizations 2005

Date	Recipient	Purpose	Amount
10/07/05	Compassionate Consumers, Inc P.O. Box 18552 Rochester, NY 14618	To Support Program Activities	\$ 500 00
10/07/05	Adams County Nebraska P.O. Box 71 Hastings, NE 68902	To Support Program Activities	\$ 5,000.00
10/07/05	APAYPA Calle Las Marias No 110, Box 5443 Mayaguez, Puerto Rico 00681-5443	To Support Program Activities	\$ (2,176.31)
10/12/05	Pardes Publishing House Hadar haCarmel 28 Yosef St , Haifa 33145, Israel	To Support Program Activities	\$ 500 00
11/01/05	Helga Tacreiter P.O. Box 227 Shiloh, NJ 08353	To Support Program Activities	\$ 500 00
11/07/05	Romania Animal Rescue 8000 Morgan Territory Road Livermore, CA 94551	To Support Program Activities	\$ 3,000.00
12/01/05	Helga Tacreiter P.O. Box 227 Shiloh, NJ 08353	To Support Program Activities	\$ 500.00
12/01/05	Help in Suffering Maharani Farm, Durgapura Jaipur 302018 Rajasthan, INDIA	To Support Program Activities	\$ 750.00
12/05/05	India Project for Animals and Nature Hill View Farm Animal Refuge Mavanalla PO, Masinagudi, The Nilgiris Tamil Nadu, South India	To Support Program Activities	\$ 500 00
12/19/05	Elizabeth River Project 475 Water Street Portsmouth, VA 23704	To Support Program Activities	\$ 50 00
12/20/05	Dog Rescue Center Samui 1192 Waring Street Seaside, CA 93955	To Support Program Activities	\$ 50.00
12/20/05	California Wildlife Center P.O. Box 2022 Malibu, CA 90265	To Support Program Activities	\$ 10 00
12/29/05	ACLU Foundation 125 Broad St , 18th floor New York, NY 10004-2400	To Support Program Activities	\$ 300 00
01/01/06	Helga Tacreiter P.O. Box 227 Shiloh, NJ 08353	To Support Program Activities	\$ 500 00
01/11/06	Jena Lenz 8 Cambridge Avenue Garden City, NJ 11530-5108	To Support Program Activities	\$ 50.00
01/13/06	Siminov Semen Leonidovich Yokornaya Str , 5-1-82 Moscow, Russia	To Support Program Activities	\$ 1,000 00
01/25/06	SERAT 6516 Hearthstone Drive Raleigh, NC 27615	To Support Program Activities	\$ 200 00
01/31/06	JUSTICE FOR ALL SPECIES P O BOX 29232 WASHINGTON DC 20017	To Support Program Activities	\$ (400 00)



**People for the Ethical Treatment of Animals, Inc. 52-1218336**  
**Statement 16**

**PART II - Line 22: Donations to Other Organizations 2005**

<b>Date</b>	<b>Recipient</b>	<b>Purpose</b>	<b>Amount</b>
02/01/06	Helga Tacreiter P O Box 227 Shiloh, NJ 08353	To Support Program Activities	\$ 500.00
02/19/06	Virginia Beach SPCA 3040 Holland Road Virginia Beach, 23453	To Support Program Activities	\$ 20 00
02/22/06	ARME C/O SHANNON KEITH 3940 LAUREL BLVD #831 STUDIO CITY, CA 91604	To Support Program Activities	\$ 1,500.00
03/01/06	Helga Tacreiter P O. Box 227 Shiloh, NJ 08353	To Support Program Activities	\$ 500 00
03/15/06	GREY2K USA P.O. Box 442117 Somerville, MA 02144	To Support Program Activities	\$ 1,000 00
03/29/06	Compassionate Consumers, Inc. P O. Box 18552 Rochester, NY 14618	To Support Program Activities	\$ 400.00
04/01/06	Helga Tacreiter P O. Box 227 Shiloh, NJ 08353	To Support Program Activities	\$ 500 00
04/06/06	PETA India 301 West Wind II Gandhigram Rd, Juhu Mumbai, India 400 049	To Support Program Activities	\$ 50,000.00
04/06/06	Earthsave Canada SPEC Building 2150 Maple St Vancouver, BC V7W 1A3 CANADA	To Support Program Activities	\$ 250 00
04/11/06	Koby Barak Kermeli 7 Ramt-Gan 52223 Israel	To Support Program Activities	\$ 500 00
04/26/06	Silke Wrobel Noah's Ark P.O Box 241 Agia Triada-Akronturi, Chania, Crete, Greece	To Support Program Activities	\$ 2,500.00
05/01/06	Helga Tacreiter P.O Box 227 Shiloh, NJ 08353	To Support Program Activities	\$ 500.00
06/01/06	Helga Tacreiter P.O. Box 227 Shiloh, NJ 08353	To Support Program Activities	\$ 500 00
06/07/06	Rocky Mountain Animal Defense 2525 Arapahoe #E4-335 Boulder, CO 80302	To Support Program Activities	\$ 3,000 00
06/14/06	Association of AHPAE 2 Rue Buffon Quarthier Gauthier Casablanca, Morocco, 928309	To Support Program Activities	\$ 300 00
06/22/06	Vegan Outreach P O Box 38492 Pittsburgh, PA 15238	To Support Program Activities	\$ 2,500.00
07/07/06	Helga Tacreiter P.O. Box 227 Shiloh, NJ 08353	To Support Program Activities	\$ 500.00
07/12/06	Animal Place P.O Box 5910 Vacaville, CA 95696	To Support Program Activities	\$ 5,000 00

People for the Ethical Treatment of Animals, Inc. 52-1218336  
Statement 16

PART II - Line 22: Donations to Other Organizations 2005

Date	Recipient	Purpose	Amount
07/20/06	BEIRUT FOR THE ETHICAL TREATMENT OF ANIMALS ATTN MARGUERITE SHAARAWI BEIRUT, LEBANON	To Support Program Activities	\$ 2,000 00
07/21/06	Tibetan Volunteers for Animals Post Box 11 Head Post Office Mysore 1 India	To Support Program Activities	\$ 100 00
07/26/06	The Fred Foundation c/o Ronnie M Cole 1303 Ella Street Anderson, SC 29621	To Support Program Activities	\$ 1,000 00
07/28/06	PETA India 301 West Wind II Gandhigram Rd, Juhu Mumbai, India 400 049	To Support Program Activities	\$ 50,000 00
07/31/06	RUSH PHILANTHROPIC ARTS FOUNDATION 512 7TH AVE. 43RD FL. NEW YORK, NY 10018	To Support Program Activities	\$ 1,500 00
07/31/06	CONCERN FOR HELPING ANIMALS IN ISRAEL P.O BOX 3341 ALEXANDRIA, VA 22302	To Support Program Activities	\$ 2,000.00
07/31/06	Virginia Beach SPCA 3040 Holland Road Virginia Beach, 23453	To Support Program Activities	\$ 140 00
07/31/06	Beebe Humane Society 707 Highway 64 West Beebe, AR 72012	To Support Program Activities	\$ 300.00
07/31/06	PAWS P O. Box 1037 Lynnwood, WA 98046	To Support Program Activities	\$ 17,254.04
<b>Subtotal Cash Donations</b>			<b>\$ 370,998.64</b>
<b>Non Cash Donations</b>			
Date	Recipient	Purpose	Amount
08/12/05	DIANA T. ARTEMIS 3431 LAKESIDE VIEW DRIVE FALLS CHURCH, VA 22041	Body TV	\$ 2,464 00
07/31/06	Debra Probert Vancouver Humane Society 8623 Granville Street #303 Vancouver, BC V6P 5A2 Canada	Body TV	\$ 2,464.00
07/31/06	Laura Brown Delaware Action for Animals P.O. Box 423 Newark, DE 19715	Body TV	\$ 2,464 00
07/31/06	Santos Lopez 69 Bennette Ave, Apt 102 New York, NY 10033	Body TV	\$ 2,464 00
<b>Subtotal Non-Cash Donations</b>			<b>\$ 9,856.00</b>
<b>Total Donations to Other Organizations</b>			<b>\$ 380,854.64</b>



People for the Ethical Treatment of Animals Inc.  
 52-1218336  
 For the Year Ended July 31, 2006

Statement 17  
 Form 990, Part II, Line 42 - Depreciation

Form 990, Part IV, Line 55 - Investments - Land, Buildings and Equipment

Description	Balance 07/31/05	Additions	Dispositions	Balance 07/31/06
<b>Assets</b>				
Land	91,170			91,170
Furniture & Equipment	360			360
Buildings & Improvements	133,943			133,943
<b>Total Fixed Assets</b>	<b>225,473</b>			<b>225,473</b>
<b>Accumulated Depreciation</b>				
Accum Depr. - F&E	360			360
Accum Depr. - B & I	33,391	3,548		36,939
<b>Total Accum Depr.</b>	<b>33,751</b>	<b>3,548</b>		<b>37,299</b>
<b>Net Fixed Assets</b>	<b>191,722</b>			<b>188,174</b>

Form 990, Part IV, Line 57 - Land, Buildings and Equipment

Description	Balance 07/31/05	Additions	Dispositions	Balance 07/31/06
<b>Assets</b>				
Land	3,000			3,000
Furniture & Equipment	374,611	48,865	25,716	397,760
Buildings & Improvements	192,791			192,791
Mobile Spay Clinic & Other Vehicles	491,425	4,437	26,007	469,855
<b>Total Fixed Assets</b>	<b>1,061,827</b>	<b>53,302</b>	<b>51,723</b>	<b>1,063,406</b>
<b>Accumulated Depreciation</b>				
Accum Depr. - F&E	142,512	87,557	10,065	220,004
Accum Depr. - B & I	42,335	8,963	0	51,298
Accum Depr. - Vehicle	307,906	67,509	9,185	366,230
<b>Total Accum. Depr.</b>	<b>492,753</b>	<b>164,029</b>	<b>19,250</b>	<b>637,532</b>
<b>Net Fixed Assets</b>	<b>569,074</b>			<b>425,874</b>

Note 1: Fixed assets are recorded at their cost and are depreciated using the straight line method, half year convention, over their useful lives. Furniture, Equipment and Vehicles are estimated to have useful lives ranging from 3 to 10 years. Buildings and improvements have useful lives ranging from 5 to 50 years. Improvements are amortized over the lesser of the remaining life of the lease or the estimated useful life of the improvements. Expenditures for major repairs are capitalized while minor costs or items with a useful life of less than a year are expensed when incurred. Upon retirement or disposal of assets, the cost and accumulated depreciation and amortization are eliminated from the accounts and the resulting gain or loss is included in the Statement of Activities.